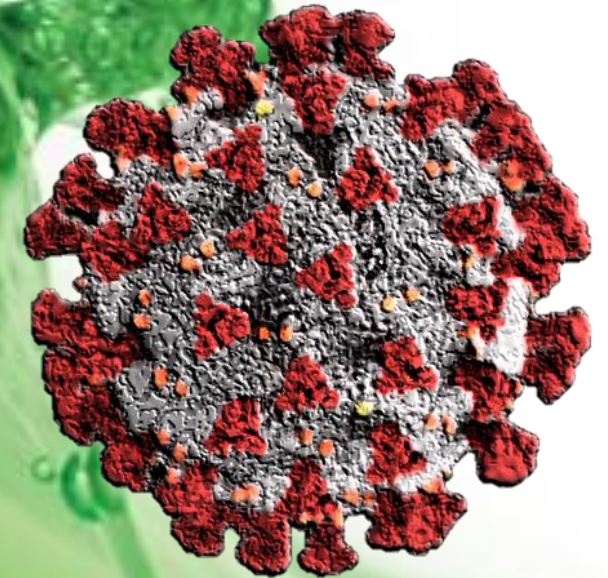


Transitioning Back From COVID-19

**Michael L. Green, Jr., MD, FACS,
FASMBS**

**Director Bariatric Surgery
Medical City Fort Worth
Live By Losing**



Disclosures

I have no financial
interest in



conflicts of
attention.



Objective

To highlight the impact and adjustments required due to COVID-19 in a primarily bariatric practice.



Life Before COVID



Overview of COVID-19 (SARS-CoV-2)

- RNA virus
- Enters human cells through angiotensin-converting-enzyme 2 (ACE2) receptor
- Spread through respiratory droplets
- Can linger in aerosols for > 3 hours
- May persist on soft or hard surfaces for days
- Infection
 - Presymptomatic: Typically asymptomatic for 1-3 days
 - Still infectious
 - Median incubation period: 4-5 days
 - Symptoms: fever, cough, sore throat, malaise, myalgias, anosmia, ageusia



COVID-19 Facts

- Risk factors
 - Age over 65 yo
 - Cardiovascular disease
 - Chronic lung disease
 - HTN
 - DM
 - Obesity
 - Immunocompromised
 - Liver disease
 - Renal disease
- Diagnostic Testing –Active Infection (Polymerase Chain Reaction)
 - Molecular Test
 - Nasal\throat swab
 - Results in 1 day to 1 week
 - Highly accurate
 - Antigen Test
 - Nasal\throat swab
 - Results within 1 hour
 - Higher rate false negative





TEXAS
Health and Human
Services

Texas Department of State
Health Services

Texas Case Counts

COVID-19

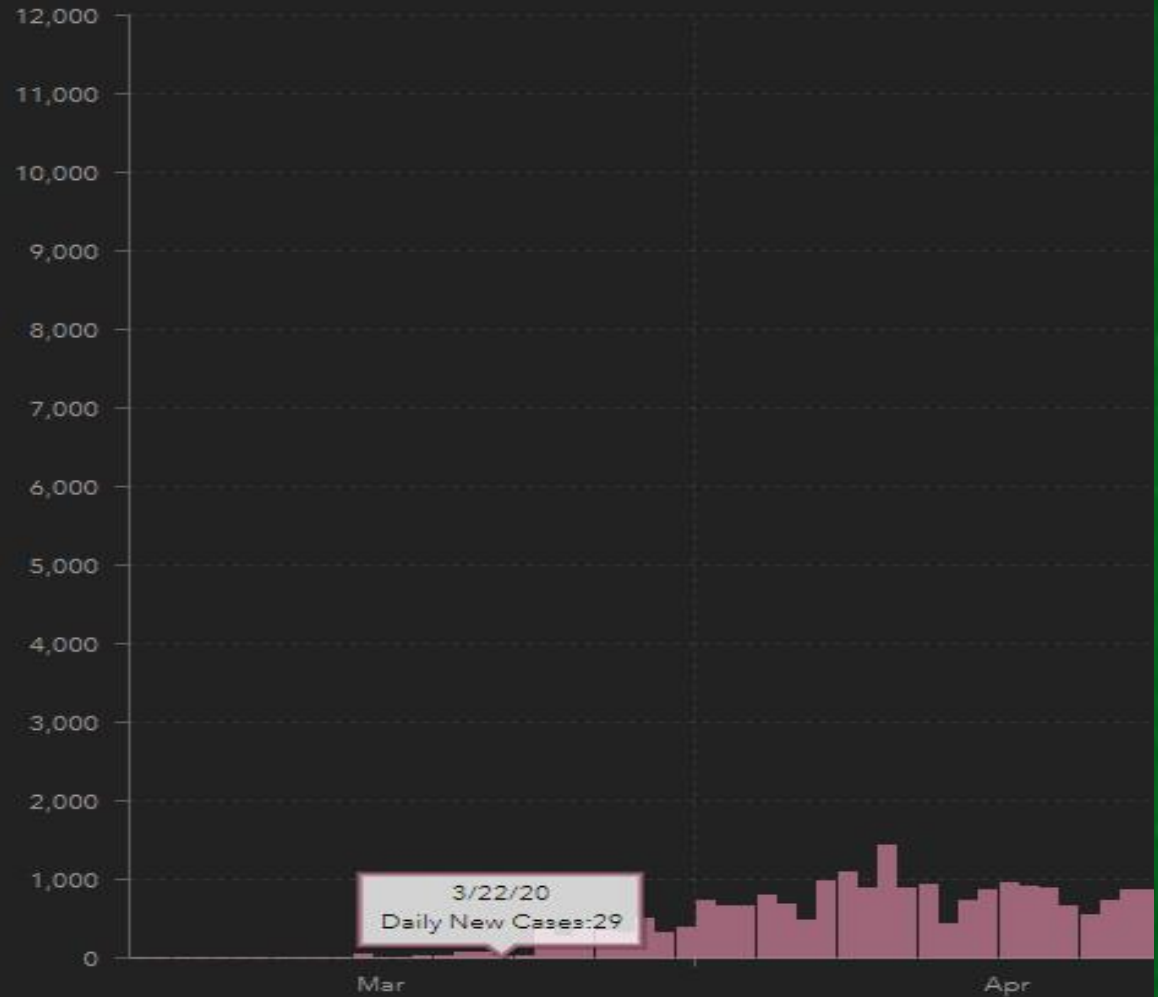
CORONAVIRUS DISEASE 2019

Daily New Cases

29

03/22/20

Daily New Reported Cases



Newsflash

- Starting **March 22** – all elective surgeries mandated to be placed on hold in Texas
- Shelter in place for Dallas County on March 23 to initially end on April 30



Office of the Texas Governor | Greg Abbott

[Home](#) [Governor Abbott](#) [First Lady](#) [Initiatives](#) [News](#) [Organization](#) [Q](#)

[Home](#) › [News](#) › Governor Abbott Issues Executive Order Increasing Hospital Capacity, Announces Supply Chain Strike Force For COVID-19 Response

Governor Abbott Issues Executive Order Increasing Hospital Capacity, Announces Supply Chain Strike Force For COVID-19 Response

March 22, 2020 | Austin, Texas | [Press Release](#)

Governor Greg Abbott today signed an Executive Order to expand hospital bed capacity as the state responds to the COVID-19 virus. These actions will reinforce Texas' health care capabilities and provide additional space for hospitals to provide care to COVID-19 patients. Under this order, the Governor directed all licensed health care professionals and facilities to postpone all surgeries and procedures that are not immediately, medically necessary to correct a serious medical condition or to preserve the life of a patient who without immediate performance of the surgery or procedure would be at risk for serious adverse medical consequences or death, as determined by the patient's physician. This does not apply to any procedure that, if performed in accordance with the commonly accepted standard of clinical practice, would not deplete the hospital capacity or the personal protective equipment needed to cope with the COVID-19 disaster.

The Governor also suspended certain regulations as requested by the Texas Health and Human Services Commission (HHSC) to allow for increased occupancy of hospital rooms – meaning hospitals will be able to treat more than one patient in a patient room, thus increasing their ability to care for the growing number of COVID-19 patients.



Clinic Protocols

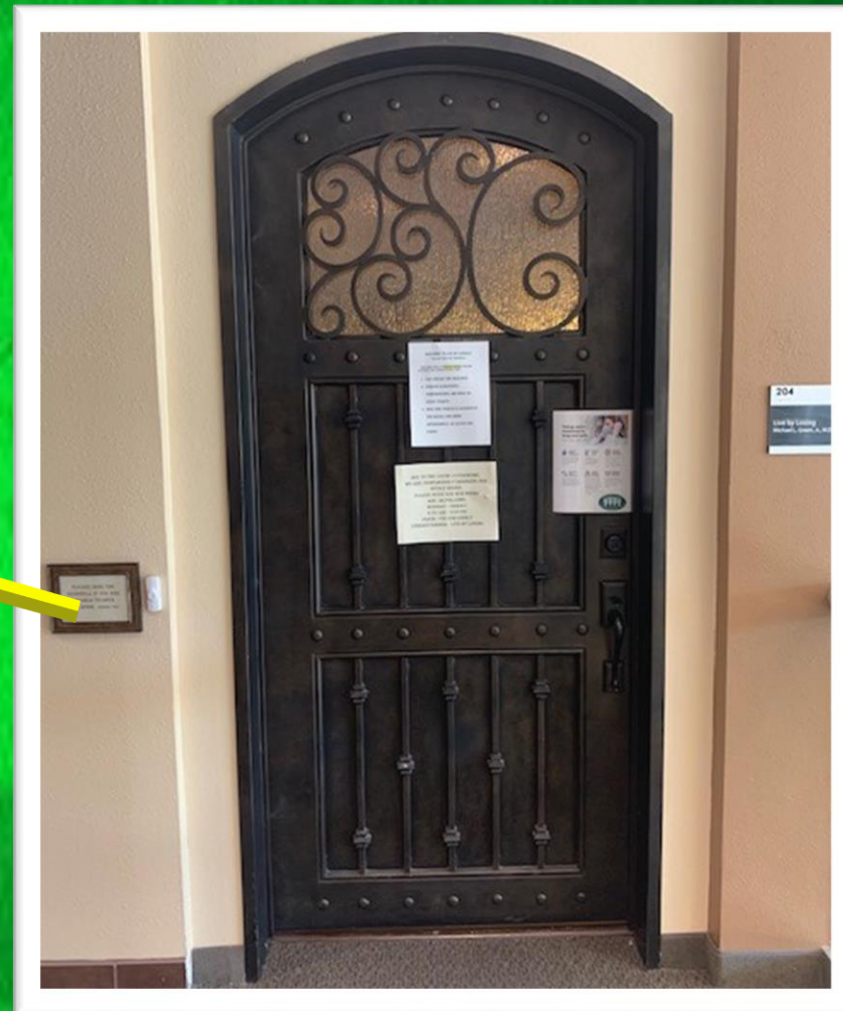


Initial Clinic Changes

- Drastically decrease clinic volume
 - Space appointments apart
 - Aim for 1 patient in front lobby at a time
 - Patients exit through back door rather than front door
 - Condensed office hours 8:30 AM – 2:30 PM (rather than 4:30 PM)
- Limited seating in front lobby
- Employees
 - Daily or BID temperature of all staff members
 - Sanitize lobby and patient care areas multiple times per day
 - Universal masking
- Patients
 - Prescreened over the phone when appointment is confirmed for COVID symptoms
 - First Point of Contact form completed upon arrival to appointment
 - cannot bring food, drink, or visitor with them to appointments
 - Morning visits offered to seniors



Front Door - Locked



Notices: Front Door

Taking extra measures to keep you safe.

Here's what we're doing.



Limiting Patient Companions

To limit the overall traffic in the practice, we are limiting patient companions to only one (1) essential person, if necessary.



Cleaning Patient Areas

Following CDC guidelines to thoroughly clean all patient areas; removing shared items such as magazines.



Screening Patients & Companions

Screening all patients at first point of contact and masking those with respiratory symptoms, or who have been in contact with a confirmed COVID-19 patient.



Practicing Social Distancing

Practicing social distancing in patient waiting areas by providing extra space between seats, and separating patients with COVID-19 symptoms.



Applying Masking Guidelines

Ensuring all practice staff, patients and visitors wear a mask within 6 feet of each other. The use of N95 or an equivalent protection from aerosolized particles, and face shield should be used by a provider for all procedures involving a high risk of aerosol transmission.



Constantly Evaluating Procedures

Constantly evaluating our procedures to ensure they are aligned with CDC guidelines. For more info, please visit our COVID-19 hub on our website.



DUE TO THE COVID-19 PANDEMIC,
WE ARE TEMPORARILY CHANGING OUR
OFFICE HOURS:
PLEASE NOTE OUR NEW HOURS
ARE AS FOLLOWS:
MONDAY – FRIDAY
8:30 AM – 2:00 PM
THANK YOU FOR KINDLY
UNDERSTANDING. LIVE BY LOSING



LBL In Office Screening

WELCOME TO LIVE BY LOSING!!

****PLEASE RING THE DOORBELL****

OUR MAIN GOAL IS PATIENT SAFETY. BEFORE ENTERING THE OFFICE PLEASE NOTE:

- 1. FACE MASKS ARE REQUIRED**
- 2. PATIENT SCREENINGS/
TEMPERATURES ARE DONE ON
EVERY PATIENT**
- 3. ONLY THE PATIENT IS ALLOWED IN
THE OFFICE FOR THEIR
APPOINTMENT- NO GUESTS MAY
ENTER**

- Additional Calls to Confirm appointments aside from text, email, or automatic phone call confirmations
- Explain screening protocols when patients arrive to our front office door
 - Face mask required
 - Temperature taken at front door
 - Screening questionnaire
 - No guests may attend appointment with patient
 - No food or drink



First Point of Contact Screening

Name: _____ Date: _____

We are committed to providing a safe environment for our patients and staff. Please complete the questions below and follow further instructions from the care team.

	No	Yes
1. Do you have any of the following symptoms?		
• Fever*		
• Cough*		
• Difficulty breathing/shortness of breath*		
• Sneezing or runny nose*		
• Body aches (other than from an injury)*		
• New rashes or open sores with fever*		
• Night sweats		
• Severe headache		
• Stiff neck		
• Eye Redness, swelling, or discharge		
• Unexplained bleeding		
• Vomiting or diarrhea		



2. In the past 3 weeks have you traveled either within the U.S. or internationally? If yes, where :		
3. In the past 3 weeks have you had close contact with someone who has traveled either within the U.S. or internationally? If yes, where :		
4. Have you been in close contact with a person confirmed to have COVID-19?		

* = if the person answers “yes” they should apply a facemask and be moved to an exam room. Persons with travel history should only be masked if they are also exhibiting symptoms marked with an asterisk.

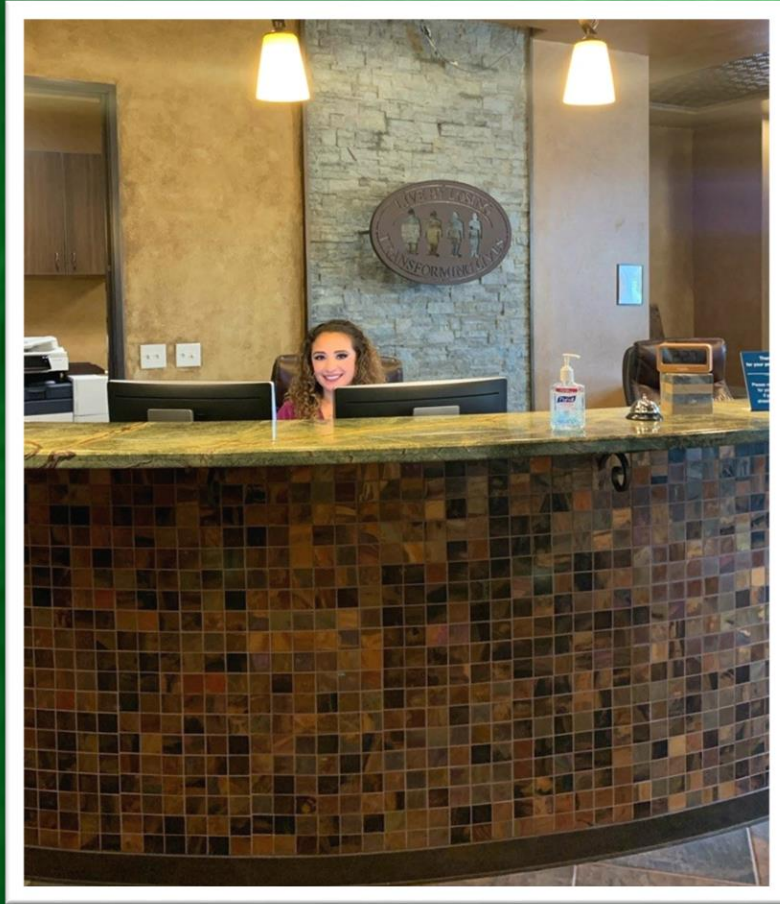
Office Staff Reviewer: _____

Check all Actions taken:

No action, screening negative	
Mask applied and cough/handwashing etiquette provided	
Patient isolated from others (moved to room or separated from others)	
Clinical lead notified	

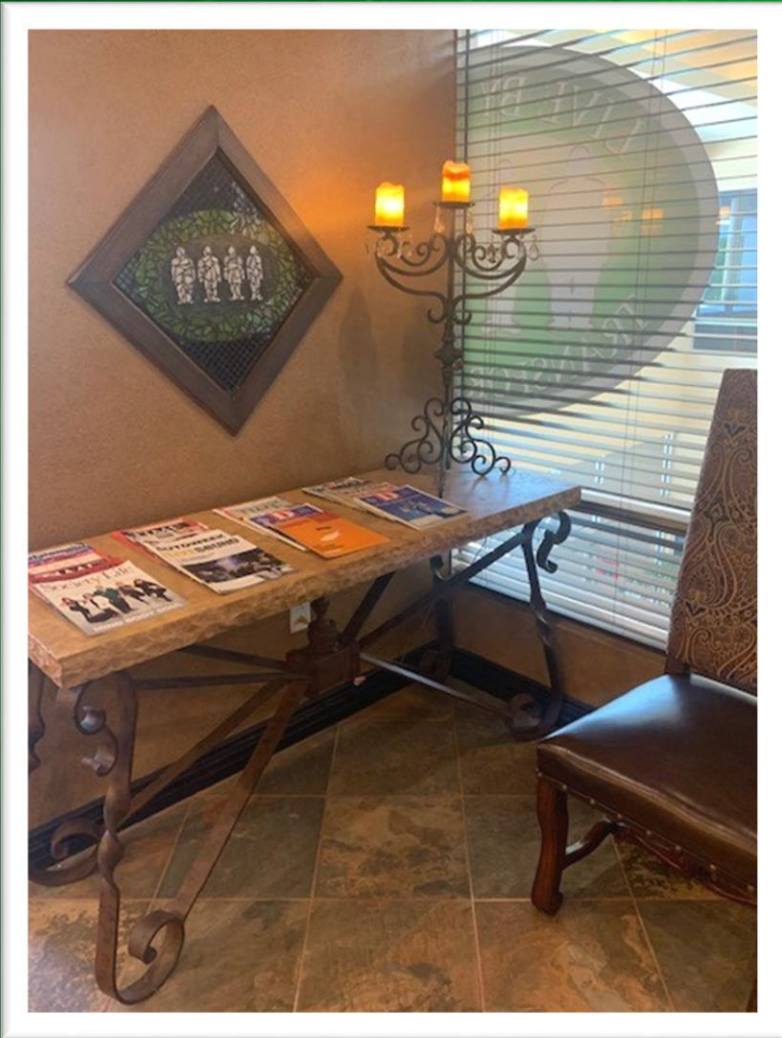


Prior to COVID-19 versus after



Front Desk
Check In





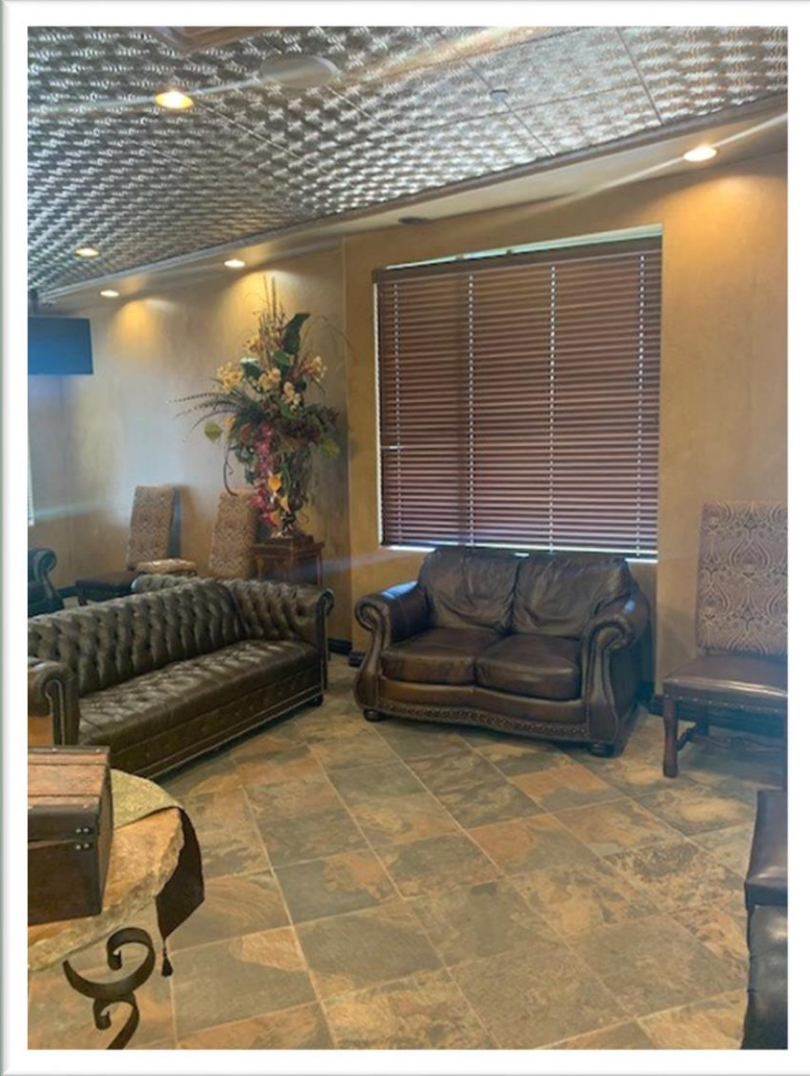
Front Lobby





Front Lobby





Front Lobby





Front Lobby





Front Lobby



Masking

- End of March –no enforcement of masking in office
- Beginning of April – All patients must wear mask upon entering clinic
- Middle of April- All providers, patients and staff wear masks
 - Mask + face shield for in office procedures



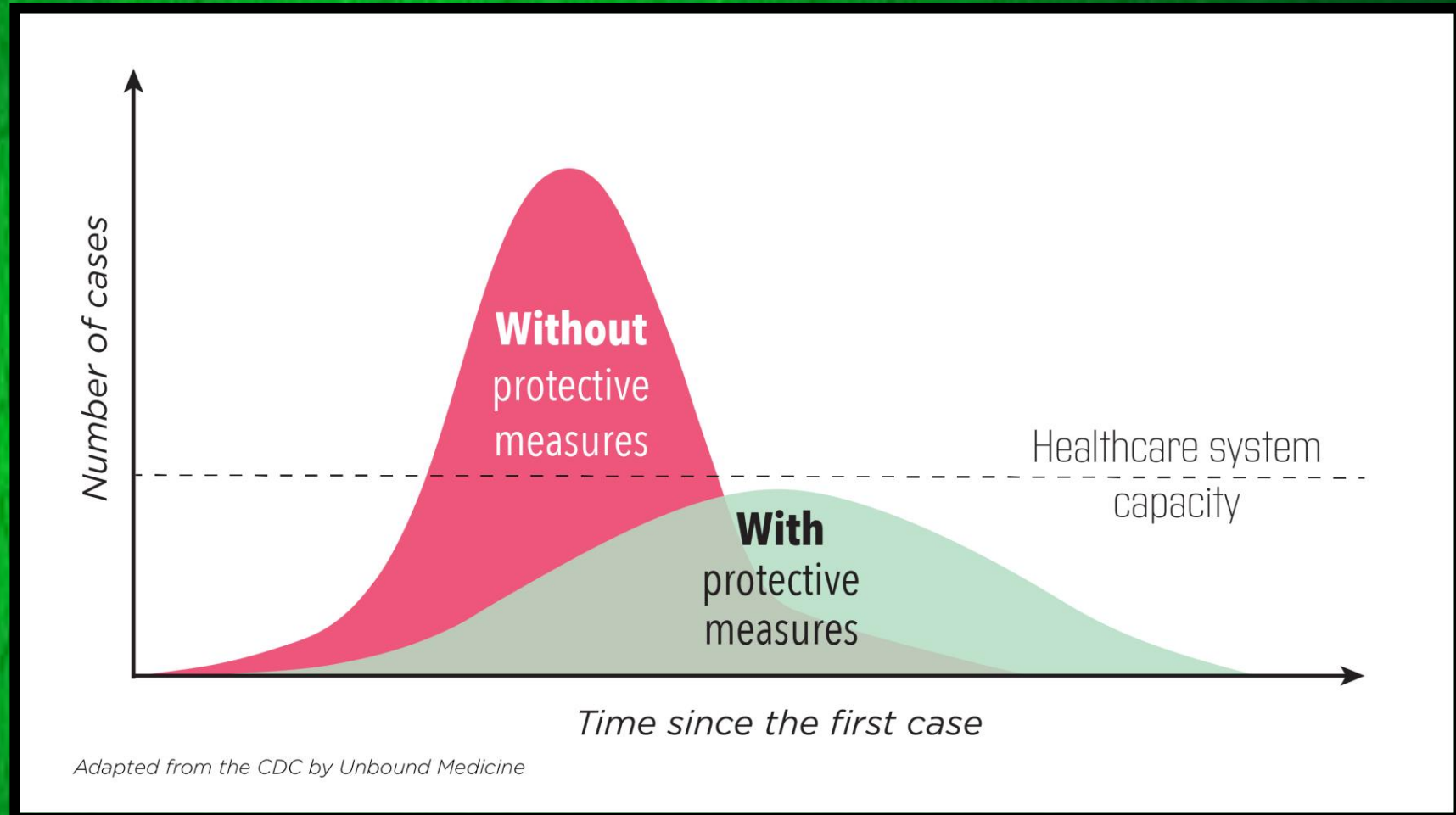
Decrease Expenses

- Providers sign off on notes quickly to assist with March loss of revenue
- Identify non-essential employees that can be eliminated
- Cut employee hours to 32 hours per week (03/25/20)
- Cut employee hours to 20 hours per week (04/13/20)
- Cancel all non-essential travel for remainder of 2020
- Decrease frequency of biohazard and shredding company pick ups
- Cut extraneous expenses- coffee, creamers, cups, cable TV



Flattening the Curve

- Ample PPE
- Brought patients back in to clinic to update H&Ps in April
- Proceed with elective surgeries on 04/30/20 in Fort Worth
- Shelter in place for Dallas County extended to 05/20/20



Hospital Protocols

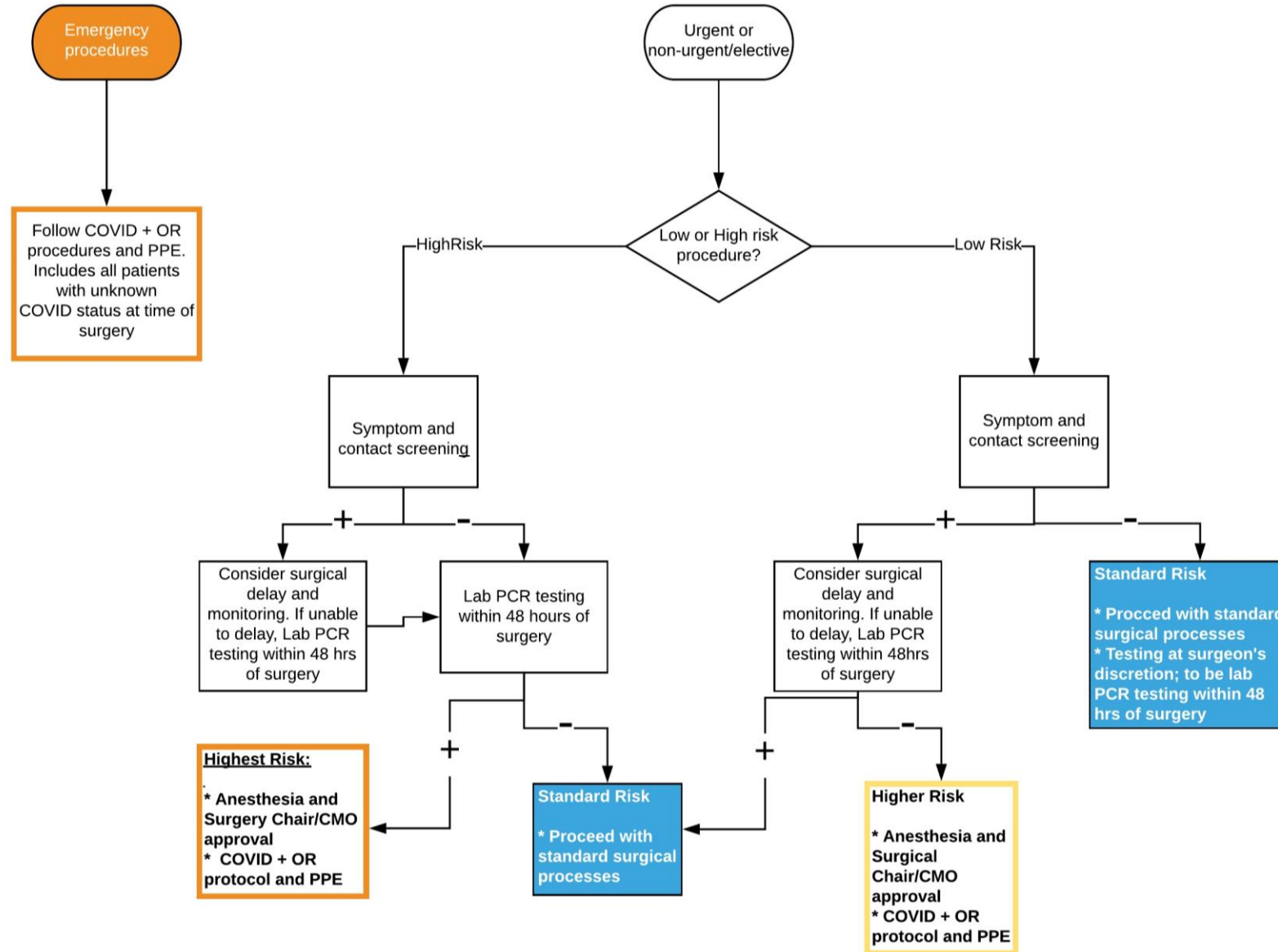


Pre-Operative Protocols

- Resumption of elective surgical procedures the first week of May 2020
- COVID testing 48 hours prior to surgery → Patient must then self quarantine until surgical procedure
- No positive test results on surgical patients to date



Surgical & Procedural Perioperative Safety Algorithm



Changes in Operating Room

- Intubation/Extubation
 - Everyone other than anesthesia leaves OR after opening for intubation
 - Wait 3 cycles of positive air ventilation system in room
 - Masks and PPE must be signed out and removed from outside of OR
 - Everyone (aside from anesthesia) leaves room for extubation
- Slower case turnover



Inpatient Setting

- Temperature taken upon entering hospital for all providers and employees
- Masking required inside facility
- Patients cannot bring any visitors with them
- Meals prepackaged in separate containers and cost containment with limited options



June/July 2020

- Saw large increase in number of new patient referrals in clinic from other practices and patients calling to be seen
- Resume staff weekly hours to 32 hours per week at beginning of June
- Brought all staff back to 40 hours per week at end of June and resume regular clinic hours (8:30 AM – 4:30 PM)
- Start to increase number of patients seen in clinic gradually



ASMBS Statement on Bariatric Surgery

ASMBS Statement on Resumption of Surgery Released

Resumption of Surgery Released

Posted 6/23/2020

For Immediate Release
6/23/20

American Society
COVID-19 pandemic

Newberry, Fla.

bariatric surgery
and the best time
rapid resumption
[pandemic](#).

In a new position
classifying "Time-
Sensitive Surgery" or
progressive

"COVID-19 may be

are postponed, the greater the chance

professor of surgery at Harvard Medical School. "Early

metabolic and bariatric surgery are right, but the sooner it can be safely performed, the better. Other diseases can be reduced or resolved."

**VERY
NECESSARY**

...s
...y.com

mic

abolic surgery before

leading organization of
ery "medically necessary
called for the safe and
lective amid the [COVID-19](#)

ASMBS strongly rejects
ssary Time-Sensitive
e intervention and the
heart disease.

es and other related diseases

resident of the ASMBS and

on as to when conditions for

y obesity, type 2 diabetes and





TEXAS
Health and Human
Services

Texas Department of State
Health Services

Texas Case Counts

COVID-19

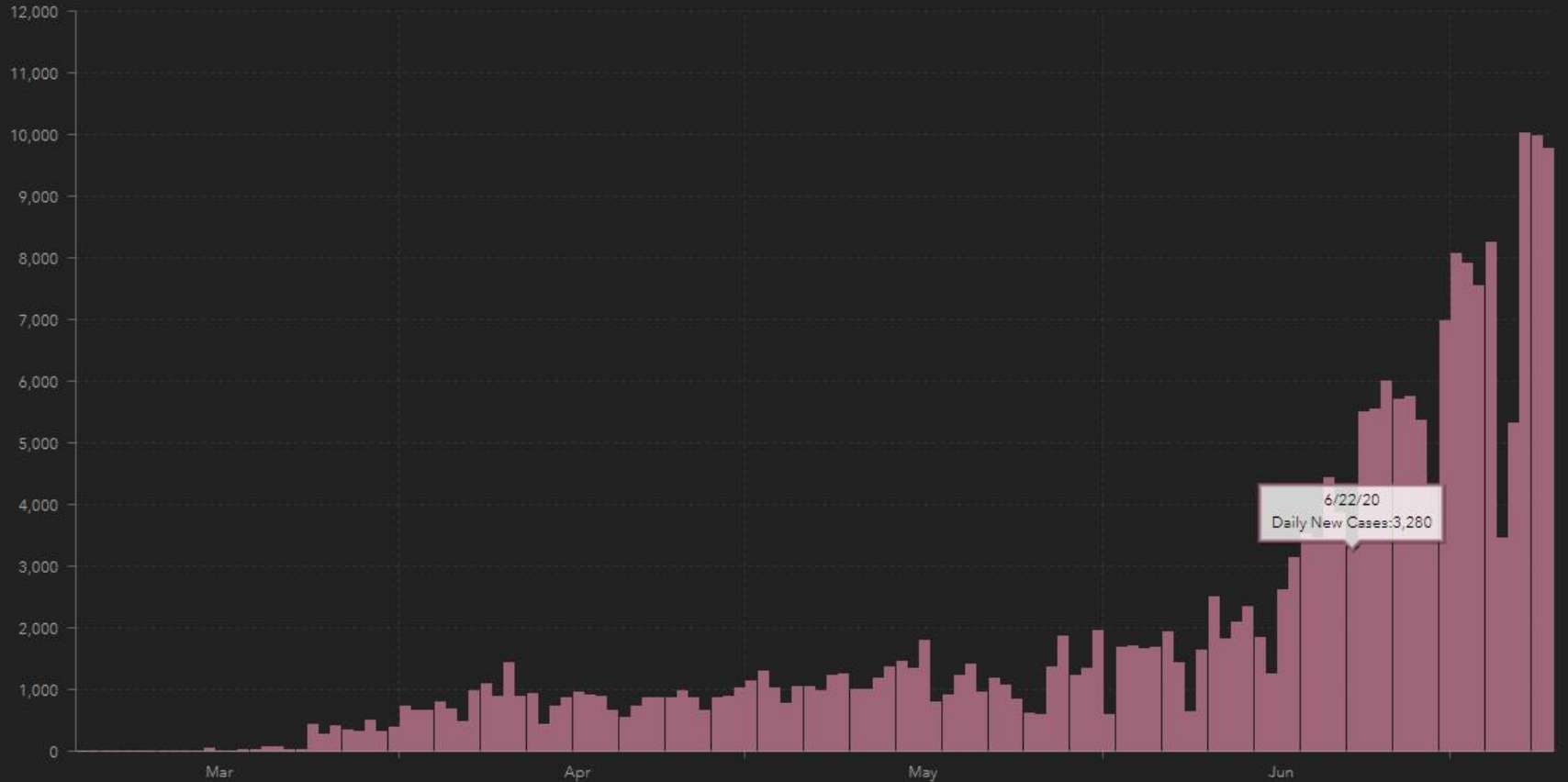
CORONAVIRUS DISEASE 2019

Daily New Cases

3,280


06/22/20

Daily New Reported Cases



Second Shutdown

- Governor Abbott suspends elective surgeries in Texas counties
- “postponed elective surgery until it is immediately necessary”



Medical City Healthcare COVID-19 UPDATE

July 9, 2020

To: Medical City Fort Worth Medical Staff

We continually monitor our volume of COVID-19 patients and evaluate our ability to safely and appropriately meet patient demand. As the number of positive cases across North Texas continues to increase, essentially doubling every 14 days, it has created significant pressure on our labor force. To maintain a safe environment of care and protect our labor force in the face of this growing pandemic, it has become necessary to postpone elective surgery cases. This pause will enable us to safely and quickly expand capacity and reassign clinical staff to care for hospitalized patients.

Beginning Monday, July 13 at 7 a.m., Medical City Fort Worth **will pause adult *inpatient and outpatient elective surgery cases until July 27.*** This applies to low acuity (Tier 1), and intermediate acuity (Tier 2 surgeries required in less than 90 days) at the following hospitals:

- Medical City Alliance
- Medical City Arlington
- Medical City Dallas
- Medical City Denton
- Medical City Fort Worth
- Medical City Las Colinas
- Medical City Lewisville
- Medical City McKinney
- Medical City North Hills
- Medical City Plano

Series

How Executive Order Expanding

Executive Order to ensure hospital bed availability for COVID-19 patients as well as elective and hospitalizations. The Governor's order suspends elective surgeries at hospitals in 14 counties. Under this order, the Governor directs all hospitals in these counties to suspend elective procedures that are not immediately, medically necessary to correct a serious condition in a patient who without immediate performance of the surgery or procedure would face significant physical consequences or death, as determined by the patient's physician.

The order may be added or subtracted from the list of counties included in the Executive Order to address future needs that may arise in other parts of the state.

"We are focused on both slowing the spread of this virus and maintaining hospital capacity for COVID-19 patients," said Governor Abbott. "These four counties have experienced significant challenges due to COVID-19 and today's action is a precautionary step to help ensure we continue to have ample supply of available beds to treat COVID-19 patients. We encourage all Texans to do their part to help contain the spread by washing their hands and practicing social distancing."



When COVID Hits Close to Home

- Staff member had family member with COVID symptoms
- Came into office and was sent home as she became symptomatic
- Was off for 3 weeks
- Re-entry back to office:



Where Do We Go?



COVID-19 CORONAVIRUS DISEASE

BE INFORMED:

Know Your Risk During COVID-19

On a scale of 1 to 10,
how risky is...

Ranked by physicians from
the TMA COVID-19 Task Force
and the TMA Committee on
Infectious Diseases



References

- Detmer, W., & U. (2020, July 15). Daily Epidemic (Epi) COVID-19 Curves & Forecasts for Coronavirus: Unbound Medicine. Retrieved July 15, 2020, from https://relief.unboundmedicine.com/relief/view/Coronavirus-Guidelines/2355041/all/Epidemic_Epi_Curves_for_Coronavirus_COVID_19?q=curve+flatten
- Doolittle, D. (2020, July 8). What's More Risky, Going to a Bar or Opening the Mail? By David Doolittle. Retrieved July 16, 2020, from <https://www.texmed.org/TexasMedicineDetail.aspx?id=53977>
- Fauci, A. S., MD, Lane, H., MD, & Redfield, R. R., MD. (2020, March 26). Covid-19 - Navigating the Uncharted: NEJM. Retrieved July 16, 2020, from <https://www.nejm.org/doi/full/10.1056/nejme2002387>
- Gandhi, R. T., MD, Lynch, J. B., MD, MPH, & Rio, C. D. (2020). Mild or Moderate Covid-19. *New England Journal of Medicine*. doi:10.1056/nejmcp2009249
- Texas Health and Human Services. (2020). Retrieved July 13, 2020, from <https://txdshs.maps.arcgis.com/apps/opsdashboard/index.html>
- U.S. Food & Drug Administration. (2020, May). Coronavirus Testing Basics. Retrieved July 15, 2020, from <https://www.fda.gov/consumers/consumer-updates/coronavirus-testing-basics>



THANK YOU !

